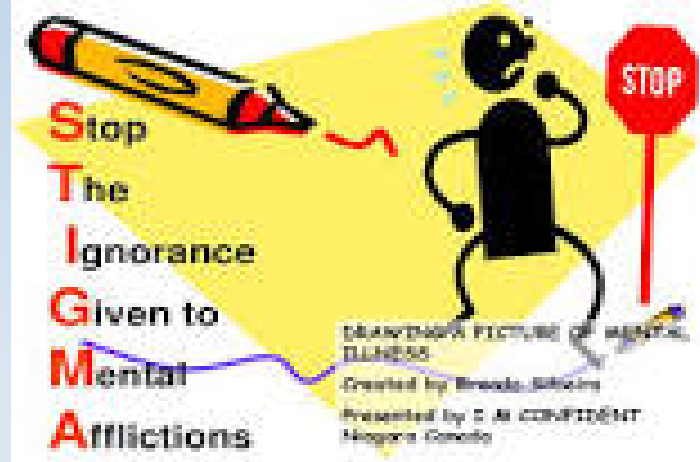


*Mental  
Health  
Recovery  
is a  
Journey,  
Not A  
Destination*

# Healthy Minds

Keeping the Mentally Ill  
Healthy and Human





Mental illnesses are common. They are health conditions involving changes in thinking, emotion or behavior (or a combination of these). Mental illnesses are associated with distress and/or problems functioning in social, work or family activities.



## A Few Types of Mental Illnesses

- Anxiety and Panic Disorders
- Bipolar Disorder
- Depression
- Eating Disorders
- Schizophrenia
- Substance Abuse and Addiction



## Role of Montgomery County Probate Court for Mental Illness

- The Montgomery County Probate Court orders mental health services in either an outpatient or inpatient setting
- Every effort is made to provide treatment on a voluntary basis
- If voluntary treatment is refused, the Probate Court could provide involuntary commitment if the person has become a danger to themselves or other and are refusing voluntary treatment





High-Utilizer Early Warning System

*It's like Doppler for mental health crises*

Doppler radar technology has saved millions of lives by giving an early warning to people in the path of dangerous storms so they can take protective action.

*What if a similar system could alert law enforcement to the risk of an impending mental health crisis in their community?*

Who	What	Where	When	Why
Sheriff Police EMS 911 ED Staff Mental Health	Color-coded alert based on a consumer's past cumulative behaviors to determine likelihood of future crisis	Available on smartphones and other mobile devices for registered users	Key predictors are updated daily with data from each participating organization	Mental health consumers interact with a broad spectrum of organizations who are unable to share information vital to the consumers' overall treatment and recovery with each other

How – A predictive model based on historical data provided continuously from each partner



## The Cost of Mental Illness

- Mental health costs are the largest single source of the health costs in the medical industries; larger than cardiovascular disease, chronic respiratory disease, cancer, or diabetes.
- Mental illness alone will account for more than half of the projected total economic burden from non-communicable diseases over the next two decades.



## Humanizing Mental Illness patients in the Courtroom via Tele-Med Video

- Cost = \$30,000.00
- Benefits
  - Keeps mentally ill patients from being treated like criminals
    - No longer being transported by sheriff's deputies
    - No longer being brought into court in hand cuffs



## Humanizing Mental Illness patients in the Courtroom via Tele-Med Video (cont.)

- Lessens the stigma associated with mental illness
- Does not interrupt on-going treatments
- It is safer for patients and staff
- Save on cost of man power and transportation
- Expedites the commitment process





## Reducing Recidivism

- The Post-Incarceration Case Management (PICM) Program was created by Montgomery County, AL Health Minds Network
- PICM:
  - ✓ Maintains staff of 3-4 dedicated case managers
  - ✓ Serves an average of 66 clients per month
  - ✓ Average monthly recidivism (percent of clients who returned to jail for any reason in a given month) is 2.8%
  - ✓ Unemployment rate of clients decreased from 59.3% in October 2016 to 38.5% in May 2017

**Intercept 1**  
Law Enforcement and  
Emergency Services

**Intercept 2**  
Initial Detention and  
Initial Court Hearings

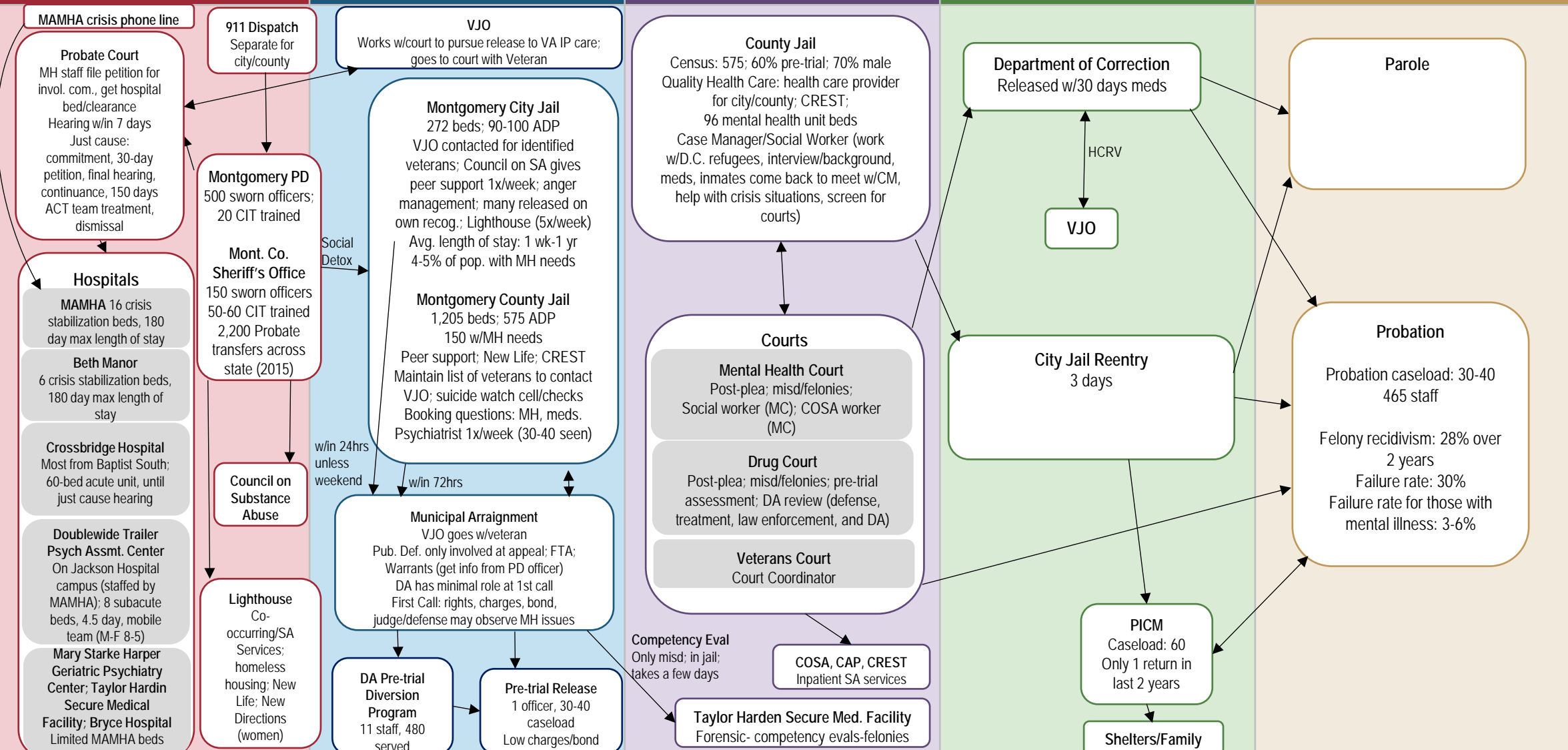
**Intercept 3**  
Jails and Courts

**Intercept 4**  
Reentry

**Intercept 5**  
Community Corrections and  
Community Supports

COMMUNITY

COMMUNITY



**Behavioral Health**  
MAMHA (clinic, ACT, mobile crisis 9am-5pm, in-home team, CSU transition team, crisis case management, community probate and support team)

**Recovery Supports**  
Lighthouse (city/county jail); Council of Substance Abuse Services (COSA, 1 day in city jail); Chemical Addiction Program (CAP); Hope Inspired Ministries; A Cut Above the Rest

**Housing/Shelter**  
Friendship Mission; Salvation Army; Recovery Houses; Lighthouse; MAMHA (Supportive Housing, Housing 1st); Restore



## Destigmatizing Mental Illness in the Minority Community

- Common mental health disorders among Minorities include:
  - ✓ Major depression
  - ✓ Attention deficit hyperactivity disorder (ADHD)
  - ✓ Suicide, among young African American men
  - ✓ Posttraumatic stress disorder (PTSD), because African Americans are more likely to be victims of violent crime
- [Article](#)



# Why Mental Illness is not Reported by Minorities?

- Lack of information and misunderstanding about mental health
- Recognizing the signs and symptoms of mental health conditions, leading to underestimating the effects and impact of mental health conditions
- Distrust and misdiagnosis
- Socio-economic factors
- [Article](#)

The Why's and How's of Mental Illness in the Minority Community





## How can we educate the Minority Community?

- Seek a doctor who has treated minority patients and are sensitive to their concerns regarding mental illness
- Understand the cultural competence of the minority concerns of the diagnosis of mental illness
- Understand how cultural backgrounds influence communication
- The treating physician should have a plan to integrate the beliefs of the patient in the treatment plan

## The Why's and How's of Mental Illness in the Minority Community (cont.)



## Montgomery County Mental Health Accomplishments

- 4 individuals now trained as CIT Instructors
- 29 individuals statewide now certified instructors
- Data Workgroup for collection and analysis
- Housing Workgroup
- Recognition at the national level – (SAMHSA) Substance Abuse and Mental Health Services Administration Best Practices. One of 14 counties selected from United States



k13371171 fotosearch.com ©

## Montgomery County Mental Health Accomplishments (cont.)

Montgomery County has also formed a  
Crisis Intervention Team

- The Crisis Intervention Team (CIT) program is a community partnership consisting of law enforcement officers, mental health providers and mental health consumers and family members.
- All community partners work together to understand mental illness, invest time and effort to avert crisis, work to de-escalate crisis and direct the consumer to appropriate care.



## How Can We Help?

- Build a Mental Health Crisis Center similar to the Restoration Center in San Antonio, TX.
- Build more housing to transition mentally ill patients
- Data Sharing with local Police and Sherriff Offices.
- Job Placement
- Access to Medicine



Thank You!

Steven L. Reed

Probate Judge

Montgomery County

Montgomery, Alabama

Office Number: 334-832-1241

[Email Address: stevenreed@mc-ala.org](mailto:stevenreed@mc-ala.org)

Twitter @stevenlreed

Facebook: JudgeStevenLReed